

# Support Units - Fixed Side, Square <Cost Reduction>

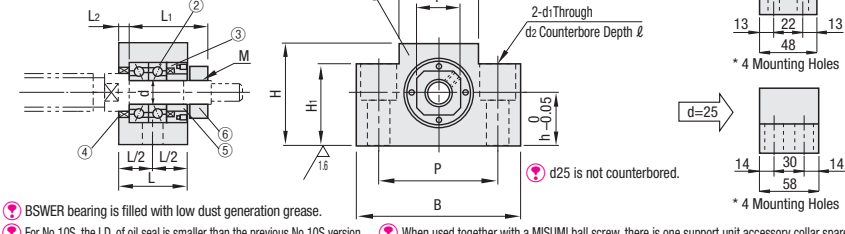
## Economy / Radial Bearing Type

### Fixed Side Economy

(Economical, for Intermediate and Low Speed Applications)



Type	M Material	S Surface Treatment
BSWE BSWEM BSWER	S45C SS400	Black Oxide Electroless Nickel Plating Low Temperature Black Chrome Plating



#### Component Details

Number	Part Name	Quantity
1	Bearing Housing	1
2	Japanese made angular contact bearing Grade 0	1 Set
3	Cover	1
4	Oil Seal	2
5	Collar	2
6	Bearing Nut (with Set Piece)	1

Part Number	Type	No.	d	L	L1	L2	B	H	h	B1	H1	P	d1	d2	l	M (Fine)	T	Oil Seal Applicable Shaft Dia.	BSWE	BSWEM	BSWER	
																			Unit Price	Unit Price	Unit Price	
BSWE BSWEM BSWER	1022	10																	14			
	10S	10																	12			
	10	27	29.5	6	70														14			
	1223	12																	14			
	12	12																	15			
	1526	15	29	38	5	80													15			
	1528	15																	20			
	15	20	48	52	10	95													25			
	20	25	58	59	14	105													31			
	25	25	58	59	14	105													31			

\* When No.=15, H dimension is taller than the Standard (P.761) by 2mm.  
 \* Take care in combining No.20 with Ball Screw BSSZ(K)2510, BSSR(K)2510 or BSST2510. The ball screw nut may come in contact with the bottom surfaces.

Ordering Example **Part Number** **BSWE20**

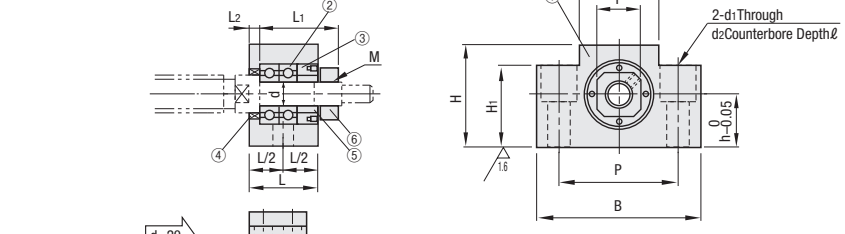
- For details of Bearings in addition to mounting interface accuracies of Support Units, Included Collar and Bearing Nut, see **P.759**
- For Combination of Ball Screws and Support Units, see **P.756**
- Low Temperature Black Chrome Plating products are filled with low dust generation grease for cleanrooms.

### Fixed Side Radial Bearing Type

(Economical, for Low Speed Applications)



Type	M Material	S Surface Treatment
BSWZ BSWZM	S45C SS400	Black Oxide Electroless Nickel Plating



#### Component Details

Number	Part Name	Quantity
1	Bearing Housing	1
2	Japanese made radial bearing	1 Set
3	Cover	1
4	Oil Seal	1
5	Collar	2
6	Bearing Nut (with Set Piece)	1

Oil Seal (4) is not included in d=6.  
 Do not disassemble the fixed side main body (1, 2, 3 and 4), as they must remain assembled.  
 For No.8S and 10S, the I.D. of oil seal is smaller than the previous No.8S and No.10S versions.  
 It is preloaded to bear the thrust load. Keep rotational speed within 3,000rpm.  
 When used together with a MISUMI ball screw, there is one support unit accessory collar spare.

Part Number	Type	No.	d	L	L1	L2	B	H	h	B1	H1	P	d1	d2	l	M (Fine)	T	Oil Seal Applicable Shaft Dia.	BSWZ	BSWZM		
																			Unit Price	Unit Price		
BSWZ BSWZM	6	6	20	22.5	3.5	42	25	13	18	20	30	5.5	9.5									
	8S	8	23	26	4	52	32	17	25	26	38	6.6	11									
	8	8	23	26	4	52	32	17	25	26	38	6.6	11									
	1022	10																				
	10S	10																				
	10	27	29.5	6	70																	
	1223	12																				
	12	12																				
	1526	15	29	38	5	80																
	1528	15																				
15	20	48	52	10	95																	
20	20	48	18	30	52	57	85	70	68	14	6	5.5	9.5	5.5	M15x1.0	22	20					

\* When No.=15, H dimension is taller than Standard by 2mm.  
 \* Take care in combining No.20 with Ball Screw BSSZ (K) 2510, BSSR (K) 2510 or BSST2510. The ball screw nut may come in contact with the bottom surfaces.

Ordering Example **Part Number** **BSWZ20**

- For details of Bearings in addition to mounting interface accuracies of Support Units, Included Collar and Bearing Nut, see **P.759**
- For Combination of Ball Screws and Support Units, see **P.756**

# Support Units - Fixed Side, Round <Cost Reduction>

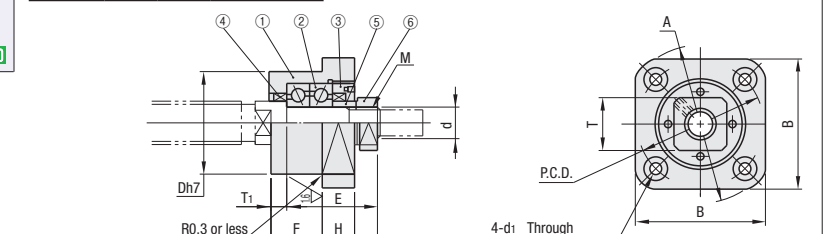
## Economy / Radial Bearing Type

### Fixed Side Economy

(Economical, for Intermediate and Low Speed Applications)



Type	M Material	S Surface Treatment
BRWE BRWEM BRWER	S45C SS400	Black Oxide Electroless Nickel Plating Low Temperature Black Chrome Plating



#### Component Details

Number	Part Name	Quantity
1	Bearing Housing	1
2	Japanese made angular contact bearing Grade 0	1 Set
3	Cover	1
4	Oil Seal	2
5	Collar	2
6	Bearing Nut (with Set Piece)	1

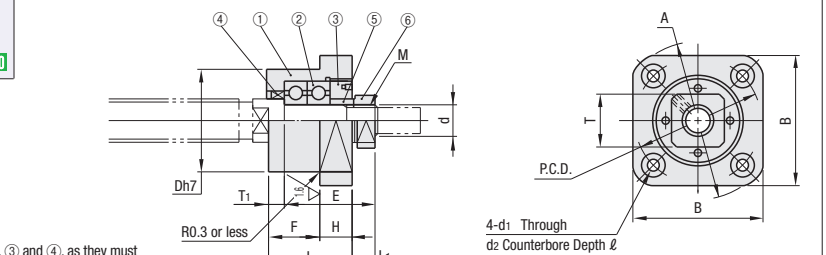
Part Number	Type	No.	d	L	H	F	E	D	A	P.C.D.	B	L1	T1	d1	d2	l	M (Fine)	T	Oil Seal Applicable Shaft Dia.	BRWE	BRWEM	BRWER	
																				Unit Price	Unit Price	Unit Price	
BRWE BRWEM BRWER	10S	10																		12			
	10	10	26	10	16	29.5	34	52	42	42	8.5	5	4.5	8	4.5	M10x1.0	17	12					
	12	12																		14			
	12	12																		15			
	15	15	30	13	17	38	40	63	50	52	14	6	5.5	9.5	5.5	M15x1.0	22	20					
	20	20	48	18	30	52	57	85	70	68	14	6	5.5	9.5	5.5	M20x1.0	30	25					
25	25	54	24	30	59	63	98	80	79	15	10	9	15	8.5	M25x1.5	35	31						

### Fixed Side Radial Bearing Type

(Economical, for Low Speed Applications)



Type	M Material	S Surface Treatment
BRWZ BRWZM	S45C SS400	Black Oxide Electroless Nickel Plating



#### Component Details

Number	Part Name	Quantity
1	Bearing Housing	1
2	Japanese made radial bearing	1 Set
3	Cover	1
4	Oil Seal	1
5	Collar	2
6	Bearing Nut (with Set Piece)	1

Part Number	Type	No.	d	L	H	F	E	D	A	P.C.D.	B	L1	T1	d1	d2	l	M (Fine)	T	Oil Seal Applicable Shaft Dia.	BRWZ	BRWZM		
																				Unit Price	Unit Price		
BRWZ BRWZM	6	6	20	7	13	22.5	22	35	28	28	6	3.5	2.9	5.5	3.5	M6x0.75	12						
	8S	8	23	9	14	26	28	43	35	35	7	4	3.4	6.5	4	M8x1.0	14	10					
	8	8	23	9	14	26	28	43	35	35	7	4	3.4	6.5	4	M8x1.0	14	11.5					
	1022	10																					
	10S	10																					
	10	10	26	10	16	29.5	34	52	42	42	8.5	5	4.5	8	4.5	M10x1.0	17	12					
12	12																						
12	12																						
1526	15	29	38	5	80																		
1528	15																						
15	20	48	18	30	52	57	85	70	68	14	6	5.5	9.5	5.5	M15x1.0	22	20						
20	20	48	18	30	52	57	85	70	68	14	6	5.5	9.5	5.5	M20x1.0	30	25						

Oil Seal (4) is not included in d=6.  
 For No.8S and 10S, the I.D. of oil seal is smaller than the previous No.8S and No.10S versions.  
 It is preloaded to bear the thrust load. Keep rotational speed within 3,000rpm.

Ordering Example **Part Number** **BRWE15** **BRWZ15**

- For details of Bearings in addition to mounting interface accuracies of Support Units, Included Collar and Bearing Nut, see **P.759**