

Miniature Linear Guides - Wide Rails

Long Blocks with Dowel Holes, Light Preload

Features: MISUMI original specifications with dowel holes. Requires less time for assembly and has better repeatability.

MISUMI Original

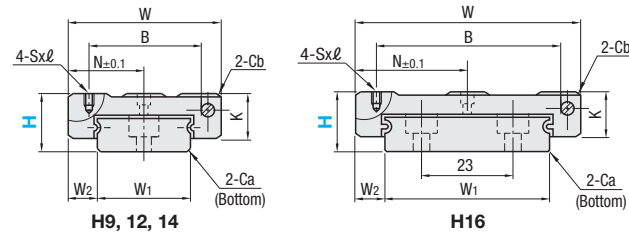
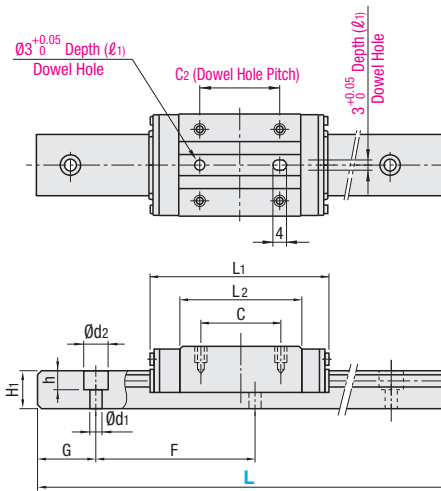


RoHS 10

Blocks and rails are not sold as separate items. This Type has guaranteed radial clearances and accuracies as sets of blocks and rails.

Material Hardness	Type	L Dimension	Number of Blocks
	Light Preload High Grade		
Stainless Steel 56HRC~	SSELBWN	Selectable	1
	SSEL2BWN		2
	SSELBWNL	Configurable	1
	SSEL2BWNL		2

Heat Resistant Temperature: -20 ~ 80°C



For L Configurable, G dimensions differ from those shown in the table below. For details, see P. 531.

- Precautions for Use**
- Blocks are equipped with retainers (wire) to prevent balls from falling off. For how to handle the blocks, see P. 525.
 - Radial clearances and accuracies are not guaranteed if the blocks and rails are interchanged from the original set combinations.
 - Straight grooves are provided on datum planes. Be sure to match the datum lines when using.
 - Rails cannot be connected end to end.
 - The accuracy of Linear Guides is guaranteed after mounting the rail (after fastening screws on the rail and pushing it onto the datum plane). Minor bending of the rail will be adjusted after being mounted and will not affect the performance.
 - Others
 - Filled with Lithium soap based grease (Mullemp Grease PS2 by Kyodo Yushi Co., Ltd.). For operating life calculation, see P. 527.
 - For operating life calculations, use our free calculation software from http://download.misumi.jp/mol/fa_soft.html.

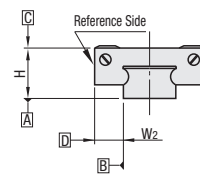
Part Number	Type	H	L	Block Dimension				Dowel Hole Dimensions				Guide Rail Dimension								
				W	L1	B	C	Sxℓ	L2	K	Cb	N	C2 (ℓ1)	W1	W2	H1	Ca	Counterbored Hole d1xd2xh	F	G
SSELBWN SSEL2BWN SSELBWNL SSEL2BWNL	9	80-290 (110)	25	43.5	19	19	M3x3	32.5	7	0.3	12.5	19	2.5	14	5.5	5.2	0.5	3.5x6x3.2	30	10
	12	80-290 (110)	30	51.6	23	24	M3x3	40.6	9	0.3	15	24	2.5	18	6	7.5	0.5	3.5x6x4.5	30	10
	14	110-470 (150)	40	61.6	28	28	M3x3.5	47.4	11	0.5	20	28	3.5	24	8	8	0.5	4.5x8x4.5	40	15
	16	110-670 (190)	60	74.9	45	35	M4x4.5	59.9	13	0.5	30	35	4	42	9	9.5	0.5	4.5x8x4.5	40	15

Dimensions in () are for 2-Block Type.

kgf=N×0.101972

H	Basic Load Rating		Allowable Static Moment			Mass	
	C (Dynamic) kN	Co (Static) kN	MA N-m	MB N-m	MC N-m	Block kg	Guide Rail kg/m
9	1.7	4.0	12.1	12.1	28.8	0.035	0.50
12	2.6	5.3	20.2	20.2	49.5	0.06	0.96
14	3.9	8.5	38.6	38.6	104.6	0.12	1.40
16	7.2	14.3	86.0	86.0	305.2	0.23	2.95

Preload and Accuracy Standards



Specifications	Unit: μm
Radial Clearance	-3~0
Height H Tolerance	±20
Pair Variation of Height H	15
Width W2 Tolerance	±25
Pair Variation of Width W2	20
Running Parallelism of Plane C against Plane A	See P. 525
Running Parallelism of Plane D against Plane A	See P. 525

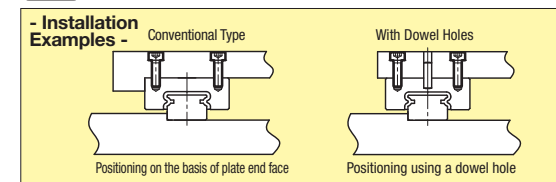
H	L	Unit Price	
		SSELBWN	SSEL2BWN
9	80		
	110		
	140		
	170		
	200		
	230		
	260		
12	80		
	110		
	140		
	170		
	200		
	230		
	260		
14	80		
	110		
	150		
	190		
	230		
	310		
	350		
16	390		
	430		
	470		
	110		
	150		
	190		
	230		
270			
310			
350			
390			
430			
470			
510			
550			
590			
630			
670			

L Dimension Configurable Type (1mm Increment)

H	Unit Price	
	SSELBWNL	SSEL2BWNL
9		
12		
14		
16		

For calculation of L Dimension Configurable Type (1mm Increment), add the above amount to the unit price of the Selectable Type longer than, and closest to this L Dimension Configurable Type.

EX Example



Ordering Example

Part Number - L

SSELBWN12L - 200 (L Type Greased)

SSELBWN12L - 200 (L Type Greased)

SSELBWN12G - 200 (G Type Greased)

Alternative grease types available.

P. 531

Alterations

Part Number - L - (MC, RLC, LLC, B3, B4)

SSEL2BWNL16 - 450 - MC

Alterations	Code	Spec.
Tapped Hole	MC	Changes the rail mounting holes from counterbored holes to tapped holes.
Rail End Cut	LLC	Cuts rail ends. Ordering Code: LLC
	RLC	Rail is cut with the product ID facing out (datum on other side).
3-Block Specifications	B3	Add 2 blocks to 1-block product to ship as 3-block separate item. There are restrictions for the L dimension length. See "Selectable Shortest Rail Length" for details. Selection Example: SSELBWN9-230-B3
4-Block Specifications	B4	Add 3 blocks to 1-block product to ship as 4-block separate item. There are restrictions for the L dimension length. See "Selectable Shortest Rail Length" for details. Selection Example: SSELBWN14-430-B4

Additional Block Price			Selectable Shortest Rail Length for B3/B4		
H	B3: Price Adder	B4: Price Adder	H	B3 (3-block)	B4 (4-block)
9			9	170	200
12			12	200	260
14			14	230	310
16			16	270	350

Options for Linear Guide

Position Retaining Parts

Block / Rail Fixing Parts

- Rail Push Plates
- Linear Lock
- Block Derailment Prevention Parts
- Stopper Bolts
- Linear Guide Lock Units