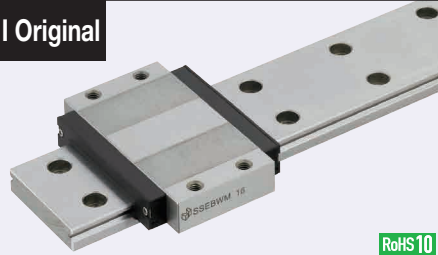


Miniature Linear Guides - Wide Rails

Wide Standard Blocks, Light Preload / Slight Clearance

Features: Wide Block Type of MISUMI original specifications. Larger screw size has enhanced fastening strength compared to standard products.

MISUMI Original

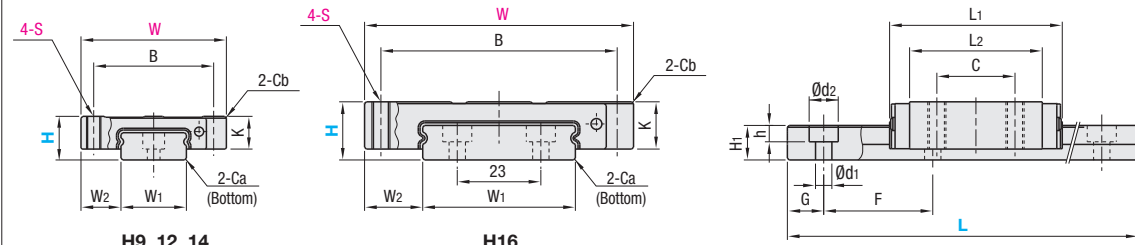


RoHS 10

Blocks and rails are not sold as separate items. This Type has guaranteed radial clearances and accuracies as sets of blocks and rails.

Material Hardness	Type		L Dimension	Number of Blocks
	Light Preload High Grade	Slight Clearance Standard Grade		
Stainless Steel 56HRC~	SSEBWM	SSEBWMZ	Selectable	1
	SSE2BWM	SSE2BWMZ		2
	SSEBWML	SSEBWM LZ	Configurable	1
	SSE2BWML	SSE2BWM LZ		2

Heat Resistant Temperature: -20 ~ 80°C



For L Configurable, G dimensions differ from those shown in the table below. For details, see P. 531.

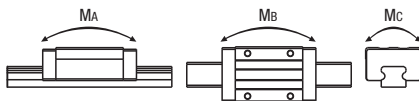
- Precautions for Use**
- Blocks are equipped with retainers (wire) to prevent balls from falling off. For how to handle the blocks, see P. 525.
 - Radial clearances and accuracies are not guaranteed if the blocks and rails are interchanged from the original set combinations.
 - Straight grooves are provided on datum planes. Be sure to match the datum lines when using.
 - Rails cannot be connected end to end.
 - The accuracy of Linear Guides is guaranteed after mounting the rail (after fastening screws on the rail and pushing it onto the datum plane). Minor bending of the rail will be adjusted after being mounted and will not affect the performance.
- Others**
- Filled with Lithium soap based grease (Mullemp Grease PS2 by Kyodo Yushi Co., Ltd.). For operating life calculation, see P. 527.
 - For operating life calculations, use our free calculation software from http://download.misumi.jp/mol/fa_soft.html.

Part Number Type	H	L	Block Dimension							Guide Rail Dimension							
			W	L1	B	C	S	L2	K	Cb	W1	W2	H1	Ca	Counterbored Hole d1xd2xh	F	G
SSEBWM SSE2BWM SSEBWML SSE2BWML SSEBWMZ SSE2BWMZ SSEBWM LZ SSE2BWM LZ	9	50~290 (110)	36	31.1	29	12	M4	20.1	7	0.3	14	11	5.2	0.5	3.5x6x3.2	30	10
	12	50~290 (110)	40	38	33	12	M4	27	9	0.3	18	11	7.5	0.5	3.5x6x4.5	30	10
	14	70~470 (150)	51	44.3	44	15	M4	30.1	11	0.5	24	13.5	8	0.5	4.5x8x4.5	40	15
	16	70~670 (190)	74	55	65	20	M5	40	13	0.5	42	16	9.5	0.5	4.5x8x4.5	40	15

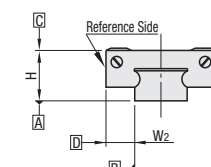
Dimensions () are for 2-Block Type.

kgf=Nx0.101972

H	Basic Load Rating/Allowable Static Moment			Mass			
	C (Dynamic) kN	Co (Static) kN	MA N·m	MB N·m	MC N·m	Block kg	Guide Rail kg/m
9	1.4	2.2	7.8	7.8	15.5	0.035	0.50
12	2.3	3.7	13.7	16.3	30.4	0.06	0.96
14	3.5	5.3	20.6	22.3	52.1	0.11	1.40
16	5.8	8.5	40.2	43.6	148	0.2	2.95



Preload and Accuracy Standards



Specifications	Light Preload, High Grade	Slight Clearance, Standard Grade
Radial Clearance	-3~0	0~+15
Height H Tolerance	±20	±20
Pair Variation of Height H	15	40
Width W2 Tolerance	±25	±25
Pair Variation of Width W2	20	40
Running Parallelism of Plane C against Plane A	See P. 525	
Running Parallelism of Plane D against Plane A	See P. 525	

Slight Clearance Type has clearance (Gap) between rails and blocks. If precision / rigidity is required, select Light Preload Type.

H	L	Unit Price			
		SSEBWM	SSE2BWM	SSEBWMZ	SSE2BWMZ
9	50				
	80				
	110				
	140				
	170				
	200				
	230				
12	260				
	290				
	50				
	80				
	110				
	140				
	170				
14	200				
	230				
	260				
	290				
	70				
	110				
	150				
16	190				
	230				
	270				
	310				
	350				
	390				
	430				
16	470				
	70				
	110				
	150				
	190				
	230				
	270				
16	310				
	350				
	390				
	430				
	470				
	510				
	550				
16	590				
	630				
	670				
	670				

L Dimension Configurable Type (1mm Increment)

H	Unit Price			
	SSEBWM	SSE2BWM	SSEBWMZ	SSE2BWMZ
9				
12				
14				
16				

For calculation of L Dimension Configurable Type (1mm Increment), add the above amount to the unit price of the Selectable Type longer than, and closest to this L Dimension Configurable Type.

Installation Examples

Conventional Type

Wide Block Type

* One size larger screws. Enhanced assembly and fastening strength.

Ordering Example

Part Number - L

SSEBWM12 - 200
 SSEBWM12L - 200 (L Type Greased)
 SSEBWM12G - 200 (G Type Greased)

Alternative grease types available.
 P531

Alterations

Part Number - L - (MC, RLC, LLC, B3, B4)
 SSE2BWML16 - 450 - MC

Alterations	Code	Spec.																		
Tapped Hole	MC	Changes the rail mounting holes from counterbored holes to tapped holes. <table border="1"> <tr><td>H</td><td>MC</td></tr> <tr><td>9</td><td>M4</td></tr> <tr><td>12</td><td></td></tr> <tr><td>14</td><td></td></tr> <tr><td>16</td><td>M5</td></tr> </table>	H	MC	9	M4	12		14		16	M5								
H	MC																			
9	M4																			
12																				
14																				
16	M5																			
Rail End Cut	LLC	Cuts rail ends. <table border="1"> <tr><td colspan="3">Ordering Code LLC</td></tr> <tr><td>H</td><td>L Cut</td><td>N</td></tr> <tr><td>9</td><td></td><td></td></tr> <tr><td>12</td><td>5</td><td>5</td></tr> <tr><td>14</td><td></td><td></td></tr> <tr><td>16</td><td></td><td>10</td></tr> </table>	Ordering Code LLC			H	L Cut	N	9			12	5	5	14			16		10
Ordering Code LLC																				
H	L Cut	N																		
9																				
12	5	5																		
14																				
16		10																		
Rail is cut with the product ID facing out (datum on other side).	RLC	Applicable to Selectable Type only. Overall length will be shorter by cutting. Not applicable to L dimension 70 or less.																		
3-Block Specifications	B3	Add 2 blocks to 1-block product to ship as 3-block separate item. There are restrictions for the L dimension length. See "Selectable Shortest Rail Length" for details. Selection Example: SSEBWM9-290-B3																		
4-Block Specifications	B4	Add 3 blocks to 1-block product to ship as 4-block separate item. There are restrictions for the L dimension length. See "Selectable Shortest Rail Length" for details. Selection Example: SSEBWM12-290-B4																		

Additional Block Price (Same Price for High/Standard Grade)		Selectable Shortest Rail Length for B3/B4	
H	B3: Price Adder	H	B3 (3-block) / B4 (4-block)
9		9	140 / 170
12		12	140 / 200
14		14	190 / 230
16		16	230 / 270

Options for Linear Guide

Position Retaining Parts	Block / Rail Fixing Parts
<ul style="list-style-type: none"> Stopper Bolts 	<ul style="list-style-type: none"> Rail Push Plates Linear Lock Linear Guide Lock Units