



Miniature Linear Guides

Short Blocks, Light Preload / Slight Clearance

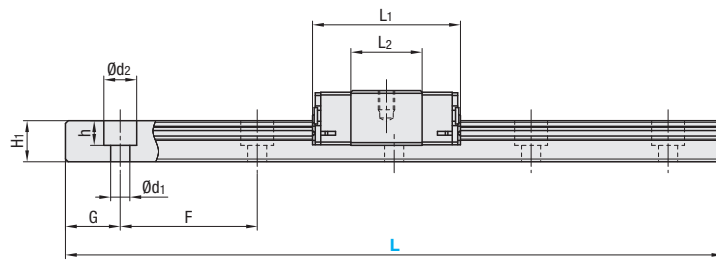
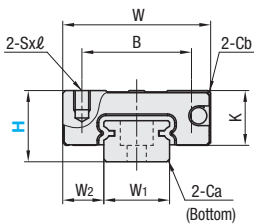
Features: Short Block Type of industry-standard spec. **20% more compact** than standard blocks.

Industry Standard



RoHS 10

- This Type has the same fitting dimensions as the other company products, and thus, can be substituted for them.
- Blocks and rails are not sold as separate items. This Type has guaranteed radial clearances and accuracies as sets of blocks and rails.



For L Configurable, G dimensions differ from those shown in the table below. For details, see P531

Material Hardness	Type		MX (Lubrication Unit)	L Dimension	Number of Blocks
	Light Preload High Grade	Slight Clearance Standard Grade			
Stainless Steel 56HRC~	SSEBS	SSEBSZ	Blank: None -MX: Provided	Selectable	1
	SSE2BS	SSE2BSZ			2
	SSEBSL	SSEBSLZ		Configurable	1
	SSE2BSL	SSE2BSLZ			2

Heat Resistant Temperature: -20 ~ 80°C

- Precautions for Use**
 - Blocks are equipped with retainers (wire) to prevent balls from falling off. For how to handle the blocks, see P525.
 - Radial clearances and accuracies are not guaranteed if the blocks and rails are interchanged from the original set combinations.
 - Straight grooves are provided on datum planes. Be sure to match the datum lines when using.
 - Rails cannot be connected end to end.
 - The accuracy of Linear Guides is guaranteed after mounting the rail (after fastening screws on the rail and pushing it onto the datum plane).
 - Minor bending of the rail will be adjusted after being mounted and will not affect the performance.
- Accessory**
 - H8 comes with cap screws (M2x6).
- Others**
 - Filled with Lithium soap based grease (Multemp Grease PS2 by Kyodo Yushi Co., Ltd.). For operating life calculation, see P527.
 - For operating life calculations, use our free calculation software from http://download.misumi.jp/mol/fa_soft.html.
 - The MX type is greased with a lithium complex grease (TOUGHLIX GREASE MP2, made by JXTG Nippon Oil & Energy Corporation).

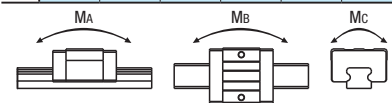
Part Number	Type	MX	H	L	Block Dimension				Guide Rail Dimension									
					W	L1	B	Sxℓ	L2	K	Cb	W1	W2	H1	Ca	Counterbored Hole d1xd2xh	F	G
SSEBS SSE2BS SSEBSL SSE2BSL	SSEBSZ SSE2BSZ SSEBSLZ SSE2BSLZ	Blank: None -MX: Provided	8	40~130 (55)	17	19.6	12	M2x2.5	9.6	6.5	0.3	7	5	4.7	0.3	2.4x4.2x2.3	15	5
			10	35~275 (75)	20	22.9	15	M3x3	11.9	7.8	0.3	9	5.5	5.5	0.3	3.5x6x3.5	20	7.5
			13	45~470 (95)	27	27	20	M3x3.5	13	10	0.5	12	7.5	7.5	0.5	3.5x6x4.5	25	10
			16	70~670 (110)	32	32.7	25	M3x4	17.7	12	0.5	15	8.5	9.5	0.5	3.5x6x4.5	40	15

Dimensions in () are for 2-Block Type.

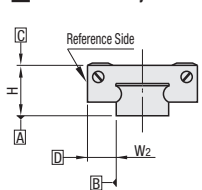
kgf~Nx0.101972

Unit: μm

H	Basic Load Rating			Allowable Static Moment			Mass	
	C (Dynamic) kN	Co (Static) kN	MA N·m	Mb N·m	Mc N·m	Block kg	Guide Rail kg/m	
8	0.79	1.27	1.9	1.6	4.6	0.008	0.19	
10	1.16	1.68	3.1	2.6	7.9	0.015	0.31	
13	1.63	2.38	5.2	4.4	14.8	0.025	0.61	
16	3.08	4.23	12.3	10.3	32.6	0.05	1.02	



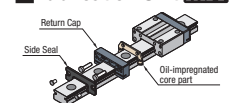
Preload and Accuracy Standards



Specifications	Light Preload, High Grade	Slight Clearance, Standard Grade
Radial Clearance	-3~0	0~+15
Height H Tolerance	±20	±20
Pair Variation of Height H	15	40
Width W2 Tolerance	±25	±25
Pair Variation of Width W2	20	40
Running Parallelism of Plane C against Plane A	See P525	
Running Parallelism of Plane D against Plane A	See P525	

Slight Clearance Type has clearance (Gap) between rails and blocks. If precision / rigidity is required, select Light Preload Type.

Lubrication Unit MX



The same block size as existing products!

The oil-impregnated porous core part has been built into the product.

- Advantages of the Lubrication Unit MX:
 - Provides long-term maintenance-free operation.
 - Reduces maintenance costs.

H	L	Unit Price			
		High Grade		Standard Grade	
		SSEBS	SSE2BS	SSEBSZ	SSE2BSZ
8	40				
	55				
	70				
	85				
	100				
	115				
	130				
	145				
	160				
	175				
	190				
	205				
	220				
	235				
	250				
	265				
	280				
	295				
	310				
	325				
	340				
	355				
	370				
	385				
	400				
	415				
	430				
	445				
	460				
	475				
	490				
	505				
	520				
	535				
	550				
	565				
	580				
	595				
	610				
	625				
	640				
	655				
	670				
10	40				
	55				
	70				
	85				
	100				
	115				
	130				
	145				
	160				
	175				
	190				
	205				
	220				
	235				
	250				
	265				
	280				
	295				
	310				
	325				
	340				
	355				
	370				
	385				
	400				
	415				
	430				
	445				
	460				
	475				
	490				
	505				
	520				
	535				
	550				
	565				
	580				
	595				
	610				
	625				
	640				
	655				
	670				
13	40				
	55				
	70				
	85				
	100				
	115				
	130				
	145				
	160				
	175				
	190				
	205				
	220				
	235				
	250				
	265				
	280				
	295				
	310				
	325				
	340				
	355				
	370				
	385				
	400				
	415				
	430				
	445				
	460				
	475				
	490				
	505				
	520				
	535				
	550				
	565				
	580				
	595				
	610				
	625				
	640				
	655				
	670				
16	40				
	55				
	70				
	85				
	100				
	115				
	130				
	145				
	160				
	175				
	190				
	205				
	220				
	235				
	250				
	265				
	280				
	295				
	310				
	325				
	340				
	355				
	370				
	385				
	400				
	415				
	430				
	445				
	460				
	475				
	490				
	505				
	520				
	535				
	550				
	565				
	580				
	595				
	610				
	625				
	640				
	655				
	670				

L Dimension Configurable Type (1mm Increment)

H	Unit Price			
	High Grade		Standard Grade	
	SSEBSL	SSE2BSL	SSEBSLZ	SSE2BSLZ
8				
10				
13				
16				

For calculation of L Dimension Configurable Type (1mm Increment), add the above amount to the unit price of the Selectable Type longer than, and closest to this L Dimension Configurable Type.



- Ordering Example
- Part Number - L
- SSE2BS10 - 275 (With Lubrication Unit)
 - SSEBN-MX10 - 275 (L Type Greased)
 - SSE2BS10L - 175 (L Type Greased)
 - SSE2BS10G - 175 (G Type Greased)
- Alternative grease types available. See P531



- Alterations
- Part Number - L - (MC, RLC, LLC, B3, B4)
- SSE2BSL16 - 450 - MC

Alterations	Code	Spec.																				
Tapped Hole	MC	Changes the rail mounting holes from counterbored holes to tapped holes. <table border="1"> <tr><td>H</td><td>MC</td></tr> <tr><td>8</td><td>M3</td></tr> <tr><td>10</td><td>M4</td></tr> <tr><td>13</td><td></td></tr> <tr><td>16</td><td>M5</td></tr> </table>	H	MC	8	M3	10	M4	13		16	M5										
H	MC																					
8	M3																					
10	M4																					
13																						
16	M5																					
Rail End Cut	Left End Cut LLC Right End Cut RLC	Cuts rail ends. <table border="1"> <tr><td colspan="4">Ordering Code LLC</td></tr> <tr><td>H</td><td>L Cut</td><td>N</td><td></td></tr> <tr><td>10</td><td>2.5</td><td></td><td>5</td></tr> <tr><td>13</td><td>5</td><td></td><td></td></tr> <tr><td>16</td><td>10</td><td></td><td></td></tr> </table> <ul style="list-style-type: none"> Applicable to Selectable Type only. Overall length will be shorter by cutting. Not applicable to H8. Not applicable to L35 of H10 and L45 of H13. 	Ordering Code LLC				H	L Cut	N		10	2.5		5	13	5			16	10		
Ordering Code LLC																						
H	L Cut	N																				
10	2.5		5																			
13	5																					
16	10																					
3-Block Specifications	B3	Add 2 blocks to 1-block product to ship as 3-block separate item. <ul style="list-style-type: none"> There are restrictions for the L dimension length. See "Selectable Shortest Rail Length" for details. Selection Example: SSEBS10-120-B3 																				
4-Block Specifications	B4	Add 3 blocks to 1-block product to ship as 4-block separate item. <ul style="list-style-type: none"> There are restrictions for the L dimension length. See "Selectable Shortest Rail Length" for details. Selection Example: SSEBS16-190-B4 																				

Additional Block Price (Same Price for High/Standard Grade) | Selectable Shortest Rail Length for B3/B4

H	B3: Price Adder		B4: Price Adder		H	B3 (3-block)	B4 (4-block)
	Standard	Standard MX	Standard	Standard MX			
8					8	85	100
10					10	95	135
13					13	120	145
16					16	150	190

Options for Linear Guide

Position Retaining Parts	Block / Rail Fixing Parts