



Miniature Linear Guides

Standard Blocks with Dowel Holes, Light Preload / Slight Clearance

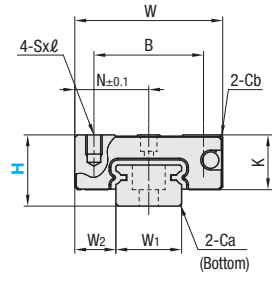
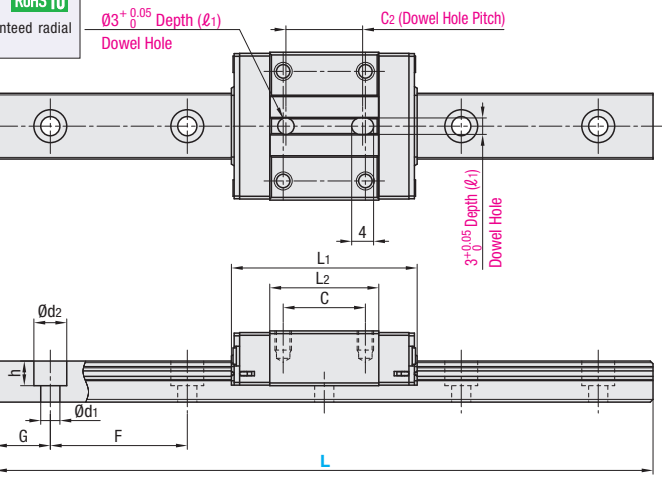
Similar Products Comparison Points | MISUMI original specifications with dowel holes. Requires less time for assembly and has better repeatability.

MISUMI Original



Material	Type		MX (Lubrication Unit)	L Dimension	Number of Blocks
	Light Preload High Grade	Slight Clearance Standard Grade			
Stainless Steel 56HRC~	SSEBN	SSEBNZ	Blank: None -MX: Provided	Selectable	1
	SSE2BN	SSE2BNZ			2
	SSEBNL	SSEBNLZ		Configurable	1
	SSE2BNL	SSE2BNLZ			2

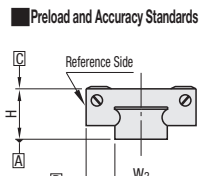
Heat Resistant Temperature: -20 ~ 80°C



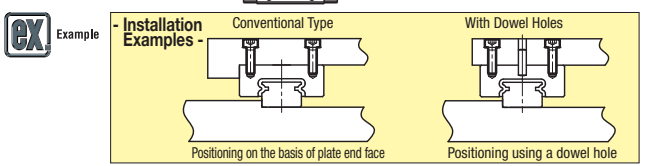
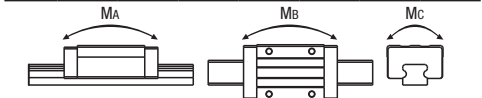
- Precautions for Use**
 - Blocks are equipped with retainers (wire) to prevent balls from falling off. For how to handle the blocks, see P525.
 - Radial clearances and accuracies are not guaranteed if the blocks and rails are interchanged from the original set combinations.
 - Straight grooves are provided on datum planes. Be sure to match the datum lines when using.
 - Rails cannot be connected end to end.
 - The accuracy of Linear Guides is guaranteed after mounting the rail (after fastening screws on the rail and pushing it onto the datum plane).
 - Minor bending of the rail will be adjusted after being mounted and will not affect the performance.
- Accessory**
 - H8 comes with cap screws (M2x6).
- Others**
 - Filled with Lithium soap based grease (Multemp Grease PS2 by Kyodo Yushi Co., Ltd.).
 - For operating life calculation, see P527.
 - For operating life calculations, use our free calculation software from http://download.misumi.jp/mol/fa_soft.html.
 - The MX type is greased with a lithium complex grease (TOUGHLIX GREASE MP2, made by JKTG Nippon Oil & Energy Corporation).

Part Number		MX	H	L	Block Dimension			Dowel Hole Dimensions			Guide Rail Dimension											
Type					W	L1	B	C	SxL	L2	K	Cb	N	C2 (l1)	W1	W2	H1	Ca	Counterbored Hole d1xd2xh	F	G	
SSEBN SSE2BN SSEBNL SSE2BNL	SSEBNZ SSE2BNZ SSEBNLZ SSE2BNLZ	Blank: None -MX: Provided	8	40~130 (70)	17	23.6	12	8	M2x2.5	13.6	6.5	0.3	8.5	8	2	7	5	4.7	0.3	2.4x4.2x2.3	15	5
			10	35~275 (95)	20	30	15	10	M3x3	19	7.8	0.3	10	10	2.5	9	5.5	5.5	0.3	3.5x6x3.5	20	7.5
			13	45~470 (120)	27	33.9	20	15	M3x3.5	19.9	10	0.5	13.5	14	3	12	7.5	7.5	0.5	3.5x6x4.5	25	10
			16	70~670 (150)	32	42.4	25	20	M3x4	27.4	12	0.5	16	20	4	15	8.5	9.5	0.5	3.5x6x4.5	40	15
			20	100~700 (160)	40	50	30	25	M4x6	34.6	15	0.5	20	25	4	20	10	11	0.5	6x9.5x5.5	60	20

H	Basic Load Rating/Allowable Static Moment			Mass			
	C (Dynamic) kN	Co (Static) kN	MA N·m	Mb N·m	Mc N·m	Block kg	Guide Rail kg/m
8	0.9	1.5	4.1	4.1	5.2	0.01	0.19
10	1.5	2.5	5.1	5.1	10.2	0.02	0.31
13	2.2	3.3	8.8	9.5	16.1	0.04	0.61
16	3.6	5.4	21.6	23.4	39.6	0.06	1.02
20	5.2	8.5	48.4	48.4	86.4	0.12	1.65



Specifications	Light Preload, High Grade	Slight Clearance, Standard Grade
Radial Clearance	-3~0	0~+15
Height H Tolerance	±20	±20
Pair Variation of Height H	15	40
Width W2 Tolerance	±25	±25
Pair Variation of Width W2	20	40
Running Parallelism of Plane C against Plane A	See P525	
Running Parallelism of Plane D against Plane A	See P525	



Lubrication Unit MX

The same block size as existing products!
The oil-impregnated porous core part has been built into the product.

Advantages of the Lubrication Unit MX:
Provides long-term maintenance-free operation.
Reduces maintenance costs.

H	L	Unit Price			
		High Grade		Standard Grade	
		SSEBN	SSE2BN	SSEBNZ	SSE2BNZ
8	40	-	-	-	-
	55	-	-	-	-
	70	-	-	-	-
	85	-	-	-	-
	100	-	-	-	-
	115	-	-	-	-
	130	-	-	-	-
	155	-	-	-	-
	175	-	-	-	-
	195	-	-	-	-
10	35	-	-	-	-
	55	-	-	-	-
	75	-	-	-	-
	95	-	-	-	-
	115	-	-	-	-
	135	-	-	-	-
	155	-	-	-	-
	175	-	-	-	-
	195	-	-	-	-
	215	-	-	-	-
13	235	-	-	-	-
	255	-	-	-	-
	275	-	-	-	-
	45	-	-	-	-
	70	-	-	-	-
	95	-	-	-	-
	120	-	-	-	-
	145	-	-	-	-
	170	-	-	-	-
	195	-	-	-	-
16	220	-	-	-	-
	245	-	-	-	-
	270	-	-	-	-
	295	-	-	-	-
	320	-	-	-	-
	345	-	-	-	-
	370	-	-	-	-
	395	-	-	-	-
	420	-	-	-	-
	445	-	-	-	-
20	470	-	-	-	-
	70	-	-	-	-
	110	-	-	-	-
	150	-	-	-	-
	190	-	-	-	-
	230	-	-	-	-
	270	-	-	-	-
	310	-	-	-	-
	350	-	-	-	-
	390	-	-	-	-
20	430	-	-	-	-
	470	-	-	-	-
	510	-	-	-	-
	550	-	-	-	-
	590	-	-	-	-
	630	-	-	-	-
	670	-	-	-	-
	100	-	-	-	-
	160	-	-	-	-
	220	-	-	-	-
280	-	-	-	-	
340	-	-	-	-	
400	-	-	-	-	
460	-	-	-	-	
520	-	-	-	-	
580	-	-	-	-	
640	-	-	-	-	
700	-	-	-	-	

H	Unit Price			
	High Grade		Standard Grade	
	SSEBNL	SSE2BNL	SSEBNLZ	SSE2BNLZ
8	-	-	-	-
10	-	-	-	-
13	-	-	-	-
16	-	-	-	-
20	-	-	-	-

For calculation of L Dimension Configurable Type (1mm Increment), add the above amount to the unit price of the Selectable Type longer than, and closest to this L Dimension Configurable Type.

Ordering Example

Part Number - L

SSEBN10 - 275 (With Lubrication Unit)

SSEBN-MX10 - 275 (L Type Greased)

SSE2BNL10L - 100 (L Type Greased)

SSE2BNL10G - 100 (G Type Greased)

Alternative grease types available.

P531

Alterations

Part Number - L - (MC, RLC, LLC, B3, B4)

SSEBN16 - 430 - MC

Alterations	Code	Spec.												
Tapped Hole	MC	Changes the rail mounting holes from counterbored holes to tapped holes.												
Rail End Cut	LLC	Cuts rail ends. Ordering Code LLC												
Rail is cut with the product ID facing out (datum on other side).	RLC	<table border="1"> <tr><th>H</th><th>L Cut</th><th>N</th></tr> <tr><td>10</td><td>2.5</td><td>5</td></tr> <tr><td>13</td><td>5</td><td>5</td></tr> <tr><td>16</td><td>10</td><td>5</td></tr> </table> <ul style="list-style-type: none"> Applicable to Selectable Type only. Overall length will be shorter by cutting. Not applicable to H8, 20 Not applicable to L35 of H10 and L45 of H13. 	H	L Cut	N	10	2.5	5	13	5	5	16	10	5
H	L Cut	N												
10	2.5	5												
13	5	5												
16	10	5												
3-Block Specifications	B3	Add 2 blocks to 1-block product to ship as 3-block separate item. There are restrictions for the L dimension length. See "Selectable Shortest Rail Length" for details. Selection Example: SSEBNL10-200-B3												
4-Block Specifications	B4	Add 3 blocks to 1-block product to ship as 4-block separate item. There are restrictions for the L dimension length. See "Selectable Shortest Rail Length" for details. Selection Example: SSEBNL16-600-B4												

Additional Block Price (Same Price for High/Standard Grade)				Selectable Shortest Rail Length for B3/B4			
H	B3: Price Adder		B4: Price Adder		H	B3 (3-block)	B4 (4-block)
	Standard	Standard MX	Standard	Standard MX			
8	-	-	-	-	8	85	115
10	-	-	-	-	10	115	155
13	-	-	-	-	13	145	170
16	-	-	-	-	16	190	230
20	-	-	-	-	20	220	280

Options for Linear Guide

Position Retaining Parts	Block / Rail Fixing Parts