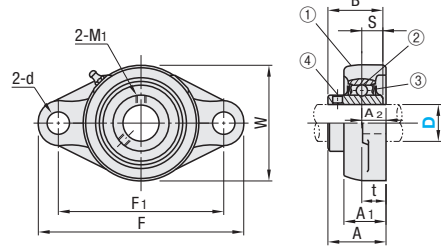


Ball Bearing Units

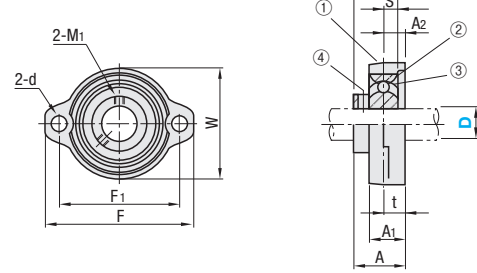
Cast Iron, Flanged



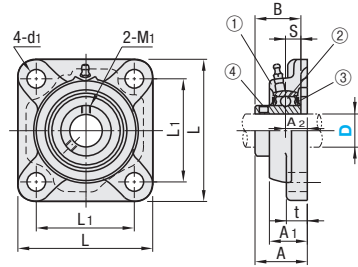
HDH (Diamond Flanged)



HDHCP (Compact Diamond Flanged)



HDF (Square Flanged)



Accuracy: JIS B 1558
JIS B 1514
JIS B 1559
Bearing Inner Diameter Tolerance: H7 (Clearance Fit)
①HDHCP, J7 (Transition Fit)
Operating Temperature: -15 ~ +100°C

Component	Material
①Housing	M FC200
②Bearing	M SUJ2
③Rubber Seal	M Nitrile Rubber (NBR)
④Set Screw	M SCM435

Part Number	JIS Nominal	Type	D	HDH	HDF	F	F1	W	L	L1	t	A	A1	A2	d	d1	B	S	Basic Load Rating (kN)		Set Screw		Mass (g)		Unit Price		
																			Cr (Dynamic)	Cor (Static)	M1	Tightening Torque (N·cm)	Axial Load Capacity (N)	HDH		HDF	
12	UCFL201	UCF201																		12.8	6.6	M6x0.75	392	640	470	630	
15	UCFL202	UCF202																		12.8	6.6	M6x0.75	392	640	450	610	
17	UCFL203	UCF203																		12.8	6.6	M6x0.75	392	640	440	600	
20	UCFL204	UCF204																		12.8	6.6	M6x0.75	392	640	1280	420	580
25	UCFL205	UCF205	130	99	68	95	70					35.8	27.0	16						14.0	7.9	M6x0.75	490	1400	1400	590	720
30	UCFL206	UCF206	148	117	80	108	83					40.2	31.0	18						19.6	11.3	M6x0.75	490	1960	1960	900	1010
35	UCFL207	UCF207	161	130	90	117	92					44.4	34	19						25.9	15.4	M8x1	1180	2590	2590	1200	1380
40	UCFL208	UCF208	175	144	100	130	102					51.2	36	21						29.3	17.9	M8x1	1180	2930	2930	1510	1770
45	UCFL209	UCF209	188	148	108	137	105					52.2	38							33.0	20.5	M8x1	1180	3300	3300	1900	2070
50	UCFL210	UCF210	197	157	115	143	111					54.6	40	22	19					35.5	23.2	M10x1.25	2350	3550	3550	2200	2360

kgf=Nx0.101972

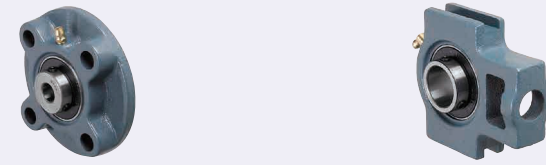
Part Number	Type	D	F	F1	W	t	A	A1	A2	d	B	S	Basic Load Rating (kN)		Set Screw		Mass (g)		Unit Price
													Cr (Dynamic)	Cor (Static)	M1	Tightening Torque (N·cm)	Axial Load Capacity (N)	HDH	
12	HDHCP	81	63.5	56	9.5	25.5	18	9.5	7	22	6	9.55	4.8	M5x0.8	250	476	280	270	
15	HDHCP	90	71.5	63	11	28.7	20	11	10	24.7	7	12.8	6.6	M6x0.75	490	1280	300	250	
17	HDHCP	95	76	69	11	30.5	20.0	11	10	27	7.5	14.0	7.9	M6x0.75	490	1400	400	250	
20	HDHCP	113	90.5	79	12	34.3	22.5	12	12	30.3	8	19.6	11.3	M6x0.75	490	1960	580	250	

kgf=Nx0.101972

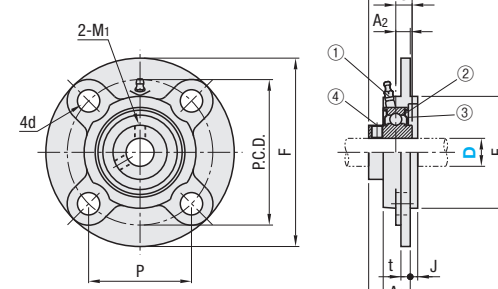
Ordering Example
Part Number
HDH20
HDF25
HDHCP25

Ball Bearing Units

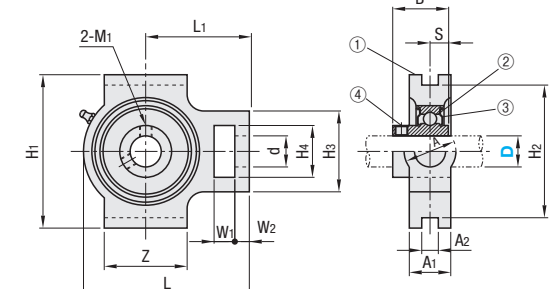
Cast Iron, Pilot / Take-Ups



HDMC (Pilot)



HDTKP (Take-Up)



Accuracy: JIS B 1558
JIS B 1514
JIS B 1559
Bearing Inner Diameter Tolerance: H7 (Clearance Fit)
Operating Temperature: -15 ~ +100°C

Component	Material
①Housing	M FC200
②Bearing	M SUJ2
③Rubber Seal	M Nitrile Rubber (NBR)
④Set Screw	M SCM435

Part Number	Type	D	F	P	P.C.D.	t	A	A1	A2	J	E	d	B	S	Basic Load Rating (kN)		Set Screw		Mass (g)	Unit Price	
															Cr (Dynamic)	Cor (Static)	M1	Tightening Torque (N·cm)			Axial Load Capacity (N)
12	HDMC	115	63.6	90	7	29.8	21	10	5	62	12	31.0	12.7		12.8	6.6	M6x0.75	392	640	890	
15	HDMC	125	70.7	100	8	32.2	23	10	8	80	12	38.1	15.9		12.8	6.6	M6x0.75	392	640	870	
17	HDMC	135	77.8	110	9	36.4	26	11	8	90	14	42.9	17.5		12.8	6.6	M6x0.75	392	640	860	
20	HDMC	145	84.8	120	14	41.2	26	11	10	100	14	42.9	17.5		12.8	6.6	M6x0.75	392	640	1280	840
25	HDMC	160	93.3	132	14	40.2	26	10	12	110	16	49.2	19		25.9	15.4	M8x1	1180	2590	1400	970
30	HDMC	165	97.6	138	14	42.6	28	10	12	110	16	51.6	19		29.3	17.9	M8x1	1180	2930	1960	1180
35	HDMC	175	104.8	148	14	44.4	28	11	12	120	16	54.6	19		33.0	20.5	M8x1	1180	3300	2590	1550
40	HDMC	188	112.0	158	14	46.2	28	11	12	130	16	57.6	19		35.5	23.2	M10x1.25	2350	3550	2930	1850
45	HDMC	197	119.5	168	14	48.0	28	11	12	140	16	60.6	19		35.5	23.2	M10x1.25	2350	3550	3300	2420
50	HDMC	207	127.0	178	14	50.0	28	11	12	150	16	63.6	19		35.5	23.2	M10x1.25	2350	3550	3550	2710

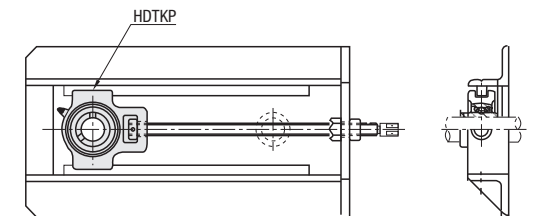
kgf=Nx0.101972

Part Number	Type	D	H1	H2	H3	H4	L	L1	A	A1	A2	W1	W2	Z	d	B	S	Basic Load Rating (kN)		Set Screw		Mass (g)	Unit Price	
																		Cr (Dynamic)	Cor (Static)	M1	Tightening Torque (N·cm)			Axial Load Capacity (N)
12	HDTKP	89	76	51	32	94	61	32	21	12	16	10	51	19	31.0	12.7		12.8	6.6	M6x0.75	392	640	790	
15	HDTKP	97	84	59	37	102	69	37	24	12	16	10	57	19	34.1	14.3		12.8	6.6	M6x0.75	392	640	770	
17	HDTKP	105	92	67	42	110	77	42	27	12	16	10	63	19	38.1	15.9		12.8	6.6	M6x0.75	392	640	760	
20	HDTKP	113	100	75	47	118	85	47	30	12	16	10	69	19	42.9	17.5		12.8	6.6	M6x0.75	392	640	1280	740
25	HDTKP	121	108	83	52	126	93	52	33	12	16	10	75	19	46.9	19.1		12.8	6.6	M6x0.75	392	640	1400	820
30	HDTKP	129	116	91	57	134	101	57	36	12	16	10	81	19	50.9	21.7		12.8	6.6	M6x0.75	392	640	1960	1300
35	HDTKP	137	124	99	62	142	109	62	39	12	16	10	87	19	54.9	24.3		12.8	6.6	M6x0.75	392	640	2590	1600
40	HDTKP	145	132	107	67	150	117	67	42	12	16	10	93	19	58.9	26.9		12.8	6.6	M6x0.75	392	640	2930	2400
45	HDTKP	153	140	115	72	158	125	72	45	12	16	10	99	19	62.9	29.5		12.8	6.6	M6x0.75	392	640	3300	2400
50	HDTKP	161	148	123	77	166	133	77	48	12	16	10	105	19	66.9	32.1		12.8	6.6	M6x0.75	392	640	3550	2500

kgf=Nx0.101972

Ordering Example
Part Number
HDMC20
HDTKP15

EX Example



•HDMC
With the pilot (dia. E part) on the plate mounting side, the ball bearing misalignment can be prevented even if the mounting screws become loose after installation.

•HDTKP
Tension can be adjusted by sliding the guide groove A2. Suitable for adjusting the tension of a belt conveyor, etc.